



Amazing 2025 Pledge
Campaign
GRACE
how sweet the sound...

Amazing Grace

For by grace you have been saved through faith, and this is not your own doing; it is the gift of God— not the result of works, so that no one may boast.

Ephesians 2:8-9

Dear Friends of LOPC,

Throughout the centuries, the Church has survived and even thrived in the face of continued change. The present moment is another time of unprecedented change for the Church, and even in the middle of new challenges, some churches are thriving and have a bright future. From the beginning of the Church to now, there is one key thing that allowed communities of Christian fellowship to adapt to change and become resilient: grace.

Grace allows us to own our own sin and complicity in the world's brokenness, while also receiving the gift of salvation and unearned merit of Christ's sacrifice. Grace allows us to see we are accepted in Christ as we are, but called to a new life of love, service, and even sacrifice. Grace makes us thankful for the gifts God has given, and joyful in deploying those gifts for others in need. Grace demands we act in humility, actively including others and celebrating the grand diversity of God's family.

When grace is at the center, greater things are always possible. Our LOPC mission statement reflects this truth: to be a welcoming and loving community of faith that learns, grows, and serves together. We exist to proclaim the grace of God made known through the gospel of Jesus Christ, welcome all who come to believe in the redemptive power of his name, grow together as his disciples, and show proof of our discipleship by actively serving others. In this spirit, LOPC is graceful and striving to be more graceful.

What is your role in building LOPC as a graceful community of faith? The information in this brochure will help you consider that carefully – please read it. Our members and friends give in many ways with their time, talent, and treasure. Thank you for the gifts you have offered to our shared ministry! As you prayerfully consider your pledge, or estimate of giving, for this coming year, may you both experience and offer grace with what you submit. We are, as you will see, at a crossroads, and in the words of the beloved hymn, it's grace will lead us home!

We're blessed to be a blessing,



Peter Whitelock



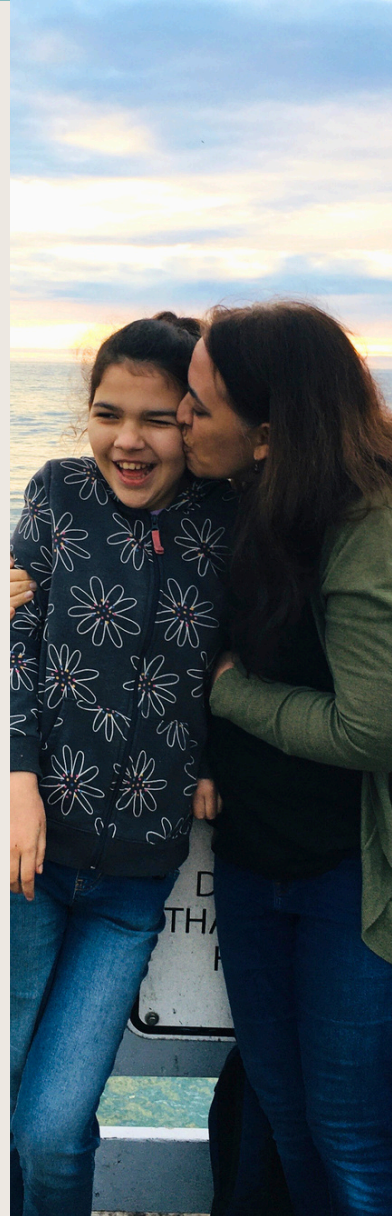
Finding *Grace* at LOPC



Heather Breen
Special Needs
at LOPC

I've never encountered a church, or anyplace for that matter, where my daughter isn't welcome. That isn't the challenge. It's the weight of having to ask. It's entering a world that isn't built for her needs and having to explain, educate, and advocate. Often it's easier to stay home. I could go into how all of the programs and events at LOPC enrich our lives, but the most important way the special needs ministry helps us experience grace is that it exists because starting it in the first place was a form of inclusion.

Inclusion is proactive. It's anticipating, not just responding. When I think of inclusion I picture an anxious teen scanning a school cafeteria trying to decide which table to approach. Then across the room someone catches their eye, smiles, and waves them over, pointing to the seat they've saved. I can feel the relief of that moment. That's what the special needs ministry has done. It's someone waving us over saying, "Here, come to our church, we made a place for you." **It's made me feel that we're not only welcome, but wanted, exactly as we are.**



Roger Fry
Senior
Engagement
at LOPC

My family has been active in this church for years. Since my sons have grown up and relocated out of the area and my wife has passed away, I especially value the connections that I have at Thursday Fellowship. The people at Thursday Fellowship know me, they remember me helping them in my professional life as an engineer, they remember teaching my kids at school, and they remember my lovely wife, Muriel. **Thursday Fellowship is a place where I can belong and participate in activities with people who fill up my life today!** I experience grace at LOPC through being known and connected to others at Thursday Fellowship.



Sending Grace into the world

Advocacy



Andrea Hilsabeck
Racial Equity
at LOPC

By striving for justice and understanding, LOPC's Racial Equity and Engagement Team helps our church embody the true essence of God's grace by **fostering a community where every individual is seen, valued, and loved.**

LOPC's recent support of the exoneration of the Port Chicago 50 is an example of our graceful ministry at work in our community.

Time

This year, **over 400** adult LOPC members volunteered to give time to LOPC mission partners. That equates to **over 1500** service hours annually!

Providing service opportunities to support our community partners is a priority at LOPC.



Food bag and hygiene kits for those experiencing homelessness and food insecurity.



Preparing school supplies and backpacks for low income children.



Deep cleaning & maintenance of key community organizations.



Delivering much needed items to homebound seniors.

Treasure

In 2024, LOPC committed over **\$321,800** to support local and international mission partners.

LOPC is a reliable and steady partner to our selected mission partners.



International Partners

Atfaluna Society of Deaf Children, Palestine
Children of Faith, India
Fotokids, Guatemala
JF Kapnek, Zimbabwe
Build Congo Schools/Healing Hearts, DRC



Local Partners

Food Bank of Contra Costa and Solono
Monument Crisis Center
Hope Solutions
STAND!

Glorifying God's Grace



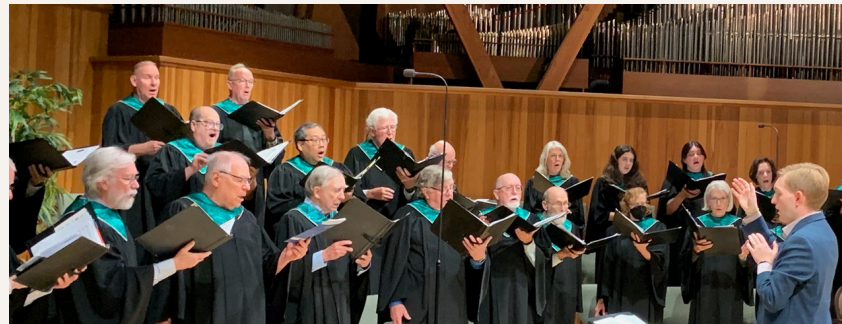
Carolyn Bealmear
2024 Deacon
Moderator



As a deacon I see firsthand how our members and friends experience a God who cares for them during hard times or when they otherwise might feel forgotten. So often, after talking with an older member or following a memorial service, I am uplifted because I see that God's grace is active. It is gratifying to see and demonstrate that **God cares about each individual and that LOPC is a conduit for God's grace to our community.**



Andy Gill
Choir Member &
Foundation Trustee



Participating in the choir offers all of us a chance to lead worship, an opportunity to experience God's presence, and participate in a loving community. In rehearsal and in the service, we each come to choir bringing the cares and concerns present in our daily lives. **Through God's grace, we are allowed to take all of our disorder and focus on interpreting the work of gifted composers to express God's love for our congregation.** Singing together we strive to offer our understanding of the message and reveal God's grace.

Graceful Giving at LOPC

Over 150 pastoral care home and hospital visits.

160 children, youth, and young adults with special needs enjoy Sunday school and mid-week programs!

Special concerts for the community raised an **additional \$13,400** for LOPC's mission partners!

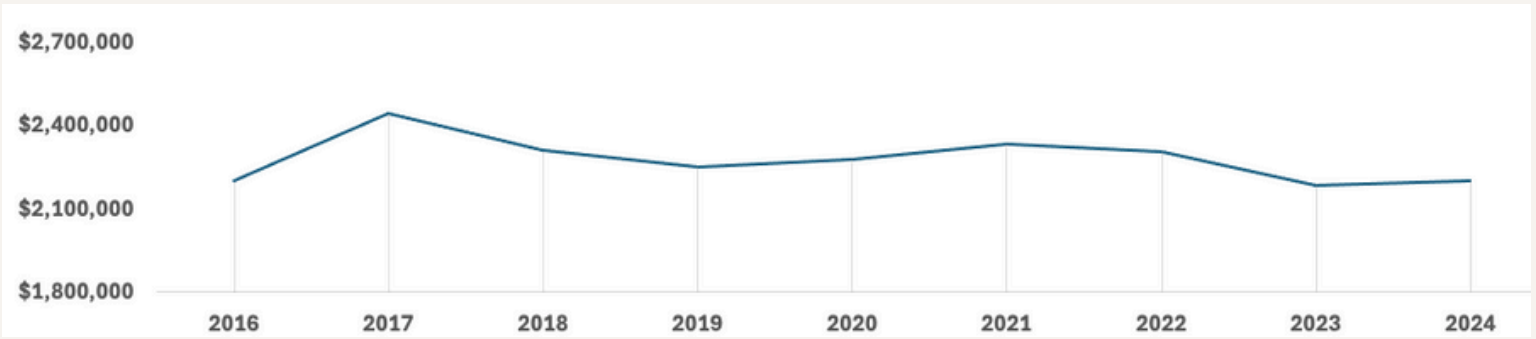
Over 50 seniors each week shared time for friendship and connection during Thursday Fellowship!

Children & Youth contributed **500 service hours** to LOPC's community partners.

500+ community members benefited from mental health lectures and special events.

Why Pledge?

In the past 9 years, pledging at LOPC has been relatively flat.
Now is the time to move beyond maintaining current ministry and grow LOPC into a leading GRACIOUS church in our community.



What does it mean to pledge?

Pledging is an integral part of our spiritual life and a way to **plan strategically** and estimate giving for the coming year. It allows us to set a goal with God for giving.

Pledging also helps the LOPC staff and ministry teams plan meaningful ministry throughout the year with a thoughtful budget.

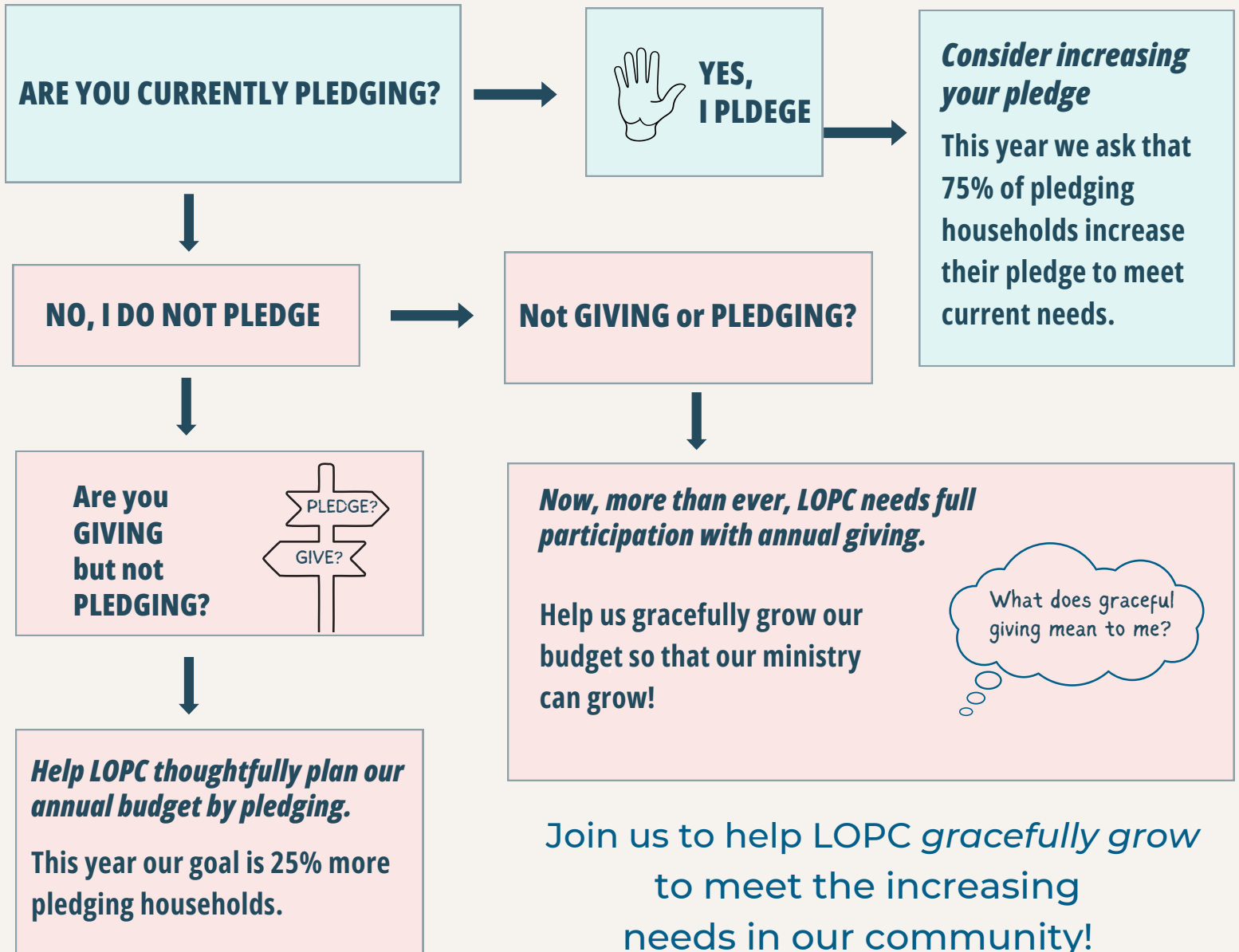
In 2024, 410 households pledged \$2,255,384.

Households	Pledges*	Total
23	\$1 - \$500	\$7,165
102	\$501 - \$1,500	\$104,929
95	\$1,501 - \$3,000	\$228,072
95	\$3,001 - \$6,000	\$433,413
40	\$6,001 - \$10,000	\$318,580
46	\$10,001 - \$25,000	\$757,225
9	\$25,001 - \$120,000	\$406,000

*As of 10/2/2024



Are you ready to help LOPC grow gracefully?



2025 Pledge Challenge



Increase 25% more pledging households for people that give to LOPC but don't currently pledge.



75% households that current pledge increase their annual pledge.



Create 100 new giving households for people who participate in LOPC's programs.



**LAFAYETTE-ORINDA
PRESBYTERIAN CHURCH**

49 Knox Drive
Lafayette, CA 94549

Return Service Requested

NON-PROFIT ORG.
U.S. POSTAGE
PAID
LAFAYETTE, CA
PERMIT NO. 12

Giving Sunday is November 3

How to PLEDGE:

How do I pledge?

You can submit a pledge card to indicate how much you plan to contribute for the year. Payments can be made monthly, quarterly, or annually. You can pay by check, cash, credit card, ACH debits, and even stock transfers.

Can I change my pledge?

Absolutely! You can change your pledge amount at any time during the year. Please contact the LOPC accountant to make changes.



Scan

to make your pledge online today.



Pledge commitments can also be submitted by filling out the enclosed envelope. Commitment envelopes are also in the Sanctuary pews and Ministry Center office.

Visit lopc.org/pledge to learn more.

Questions? Please contact Farah Mohammadzai, LOPC Accountant: (925) 283-8722 x229 • farah@lopc.org